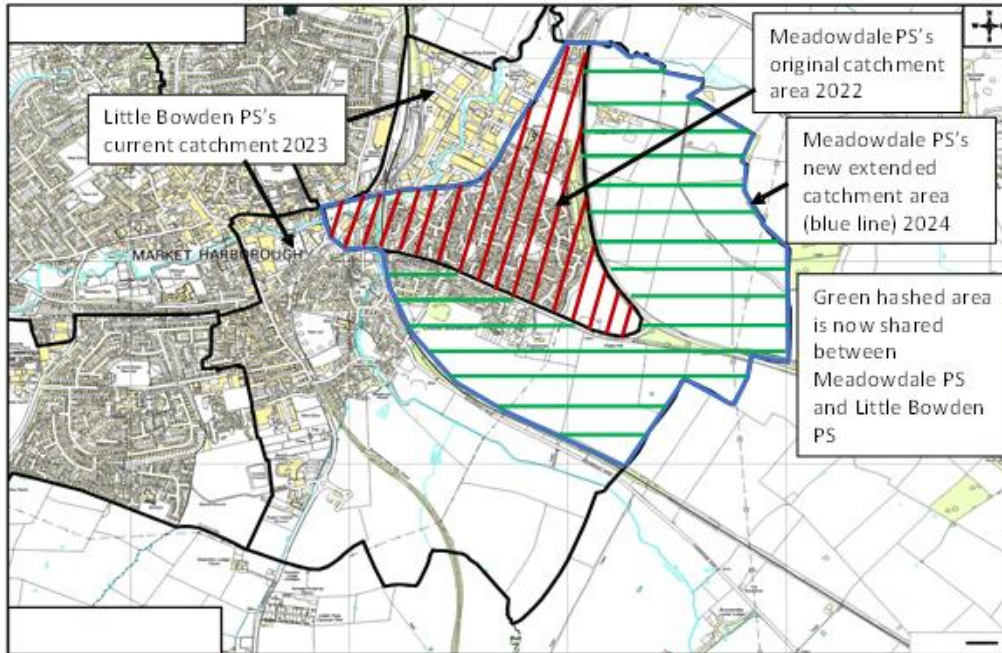
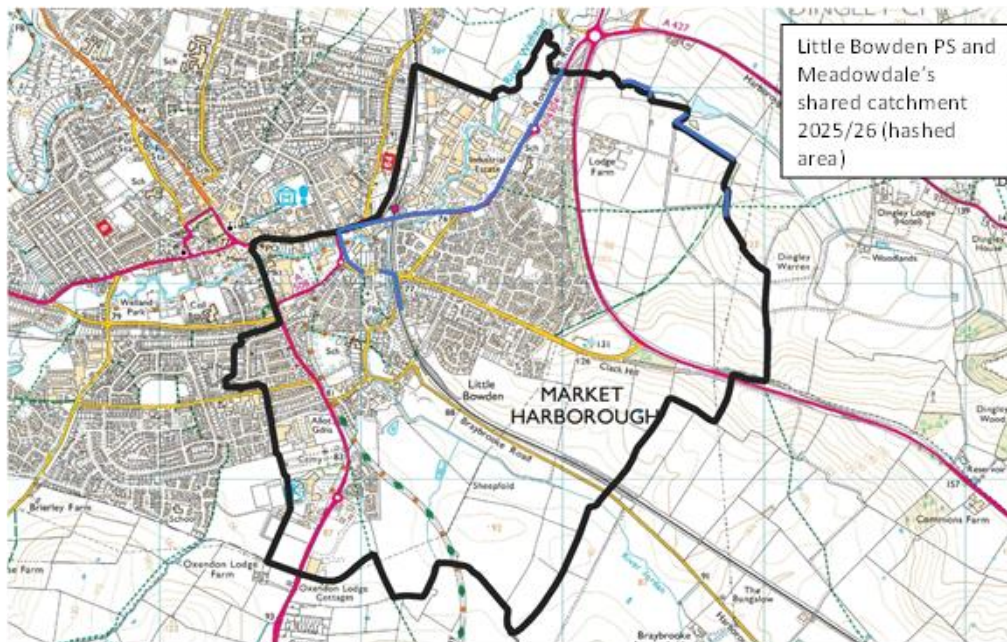


Catchment change to Little Bowden Primary School's boundaries

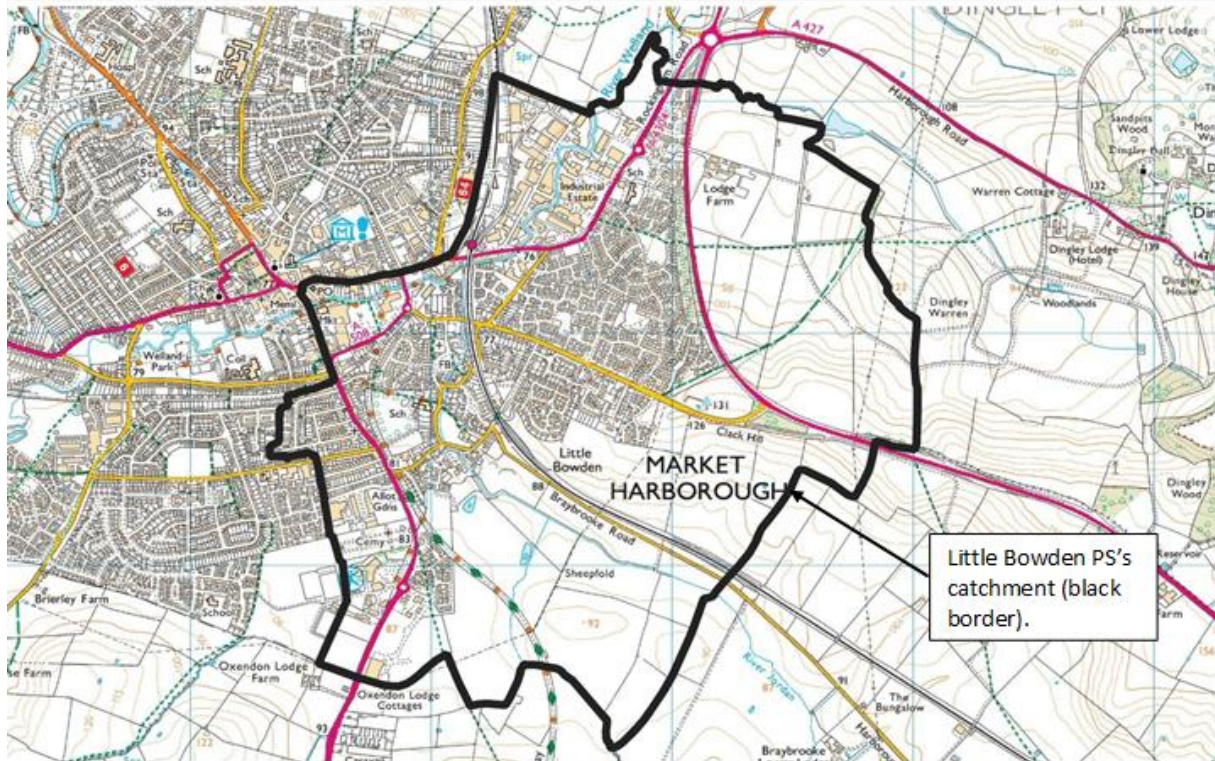
Map 1: Historic, Current and Shared catchment areas 2024.



Map 2: Proposed Little Bowden PS catchment area 2025.



Map 3: New Proposed School Catchment Map: Little Bowden School For proposed entry from 2025/26 onwards



The Council is seeking a reduction in the Admissions Number for four schools:

- Foxton Primary School seeking a reduction from 17 to 15;
- Hallaton CE Primary School seeking a reduction from 18 to 15;
- Newbold Verdon Primary School seeking a reduction from 60 to 45;
- St. Bartholomew's CE Primary School seeking a reduction from 75 to 60.

For Foxton Primary School and Hallaton CE Primary School the reductions are permanent to ensure infant class size compliance.

For Newbold Verdon Primary School and St. Bartholomew's CE Primary School the reductions are temporary.

Infant class size Rules (Scholl Admissions Code 2021)

2.16 Infant classes (those where the majority of children will reach the age of 5, 6 or 7 during the school year) must not contain more than 30 pupils with a single school teacher. Additional children may be admitted under limited exceptional circumstances. These children will remain an 'excepted pupil' for the time they are in

an infant class or until the class numbers fall back to the current infant class size limit. The excepted children are:

- a) children admitted outside the normal admissions round with Education, Health and Care Plans specifying the school;
- b) looked after children and previously looked after children admitted outside the normal admissions round;
- c) children admitted after initial allocation of places, because of a procedural error made by the admission authority or local authority in the original application process;
- d) children admitted after an independent appeals panel upholds an appeal;
- e) children who move into the area outside the normal admissions round for whom there is no other available school within reasonable distance;
- f) children of UK service personnel admitted outside the normal admissions round;
- g) children whose twin or sibling from a multiple birth is admitted otherwise than as an excepted pupil.
- h) children with special educational needs who are normally taught in a special educational needs unit attached to the school, or registered at a special school, who attend some infant classes within the mainstream school.

This page is intentionally left blank